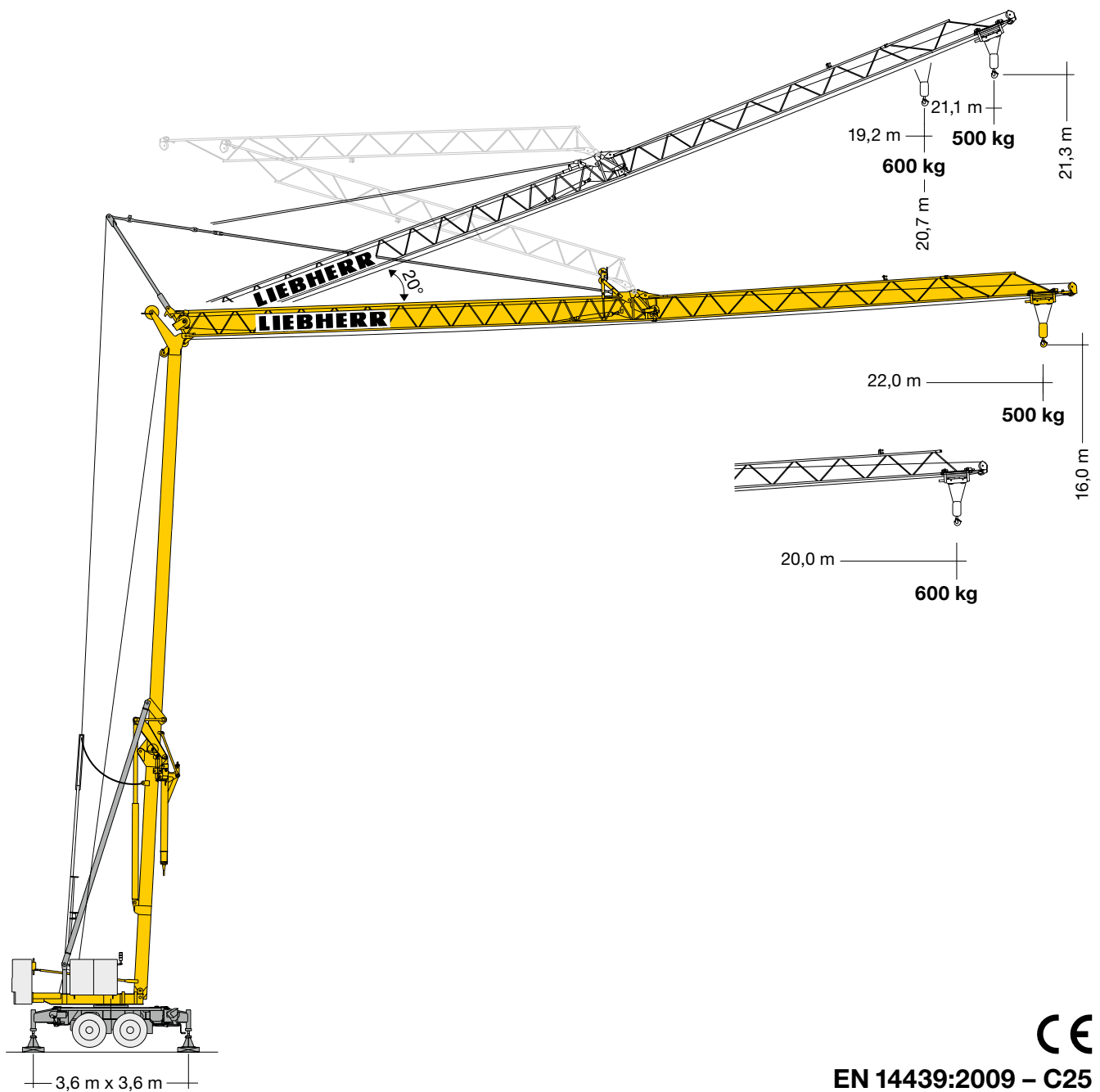
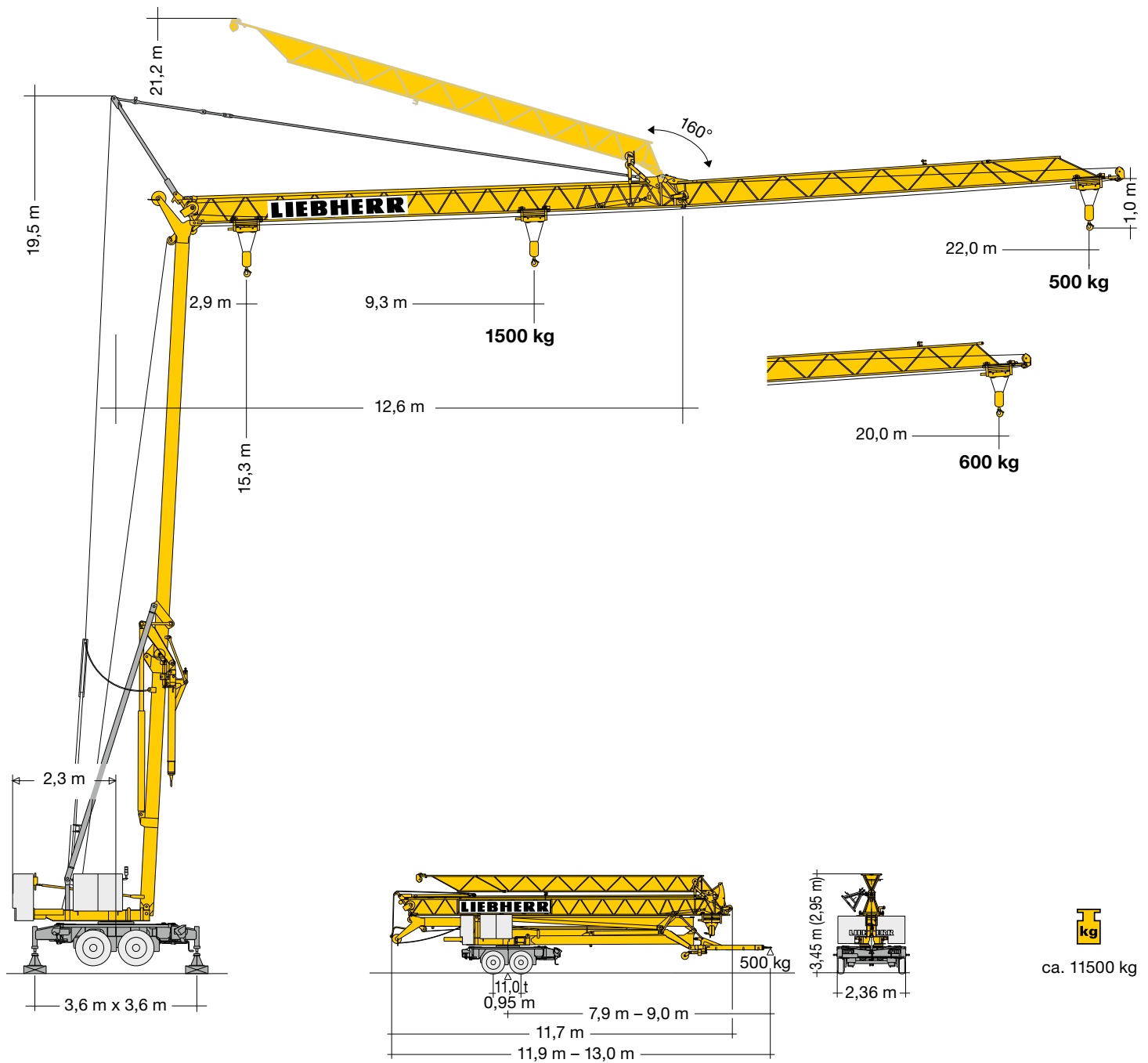


Turmdrehkran 13 HM.1

Tower Crane / Grue à tour / Gru a torre / Grúa torre /
Guindaste de torre / Кран башенный



LIEBHERR



Sattelausführung auf Anfrage
 Semi-trailer version on request
 Version semi-remorque sur demande
 Versione per rimorchio a richiesta
 Versión remolque bajo consulta
 Versão semi-reboque sob consulta
 Исполнение с прицепом по запросу

Gewicht Weight/Poids/Peso/Peso/Pesos/Macca

	<p>r = 2,3 m</p>	<p>1 x 4600 kg</p>		<p>6900 kg</p>
--	------------------	--------------------	--	----------------

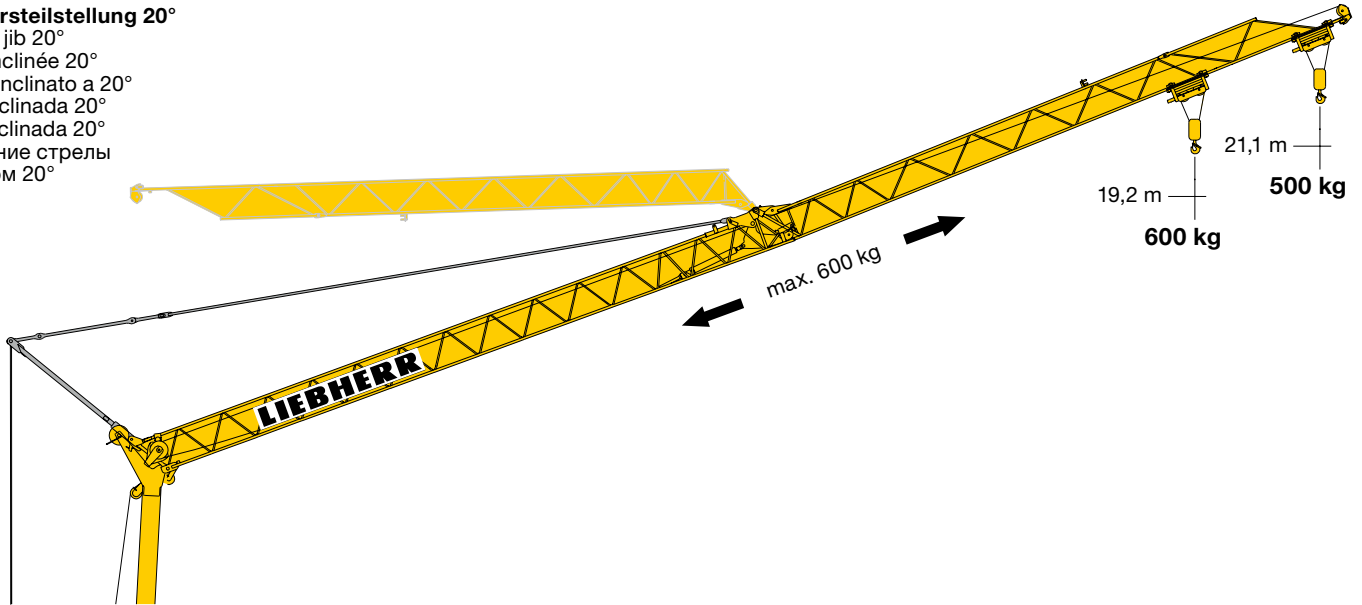
Ausladung und Tragfähigkeit

Radius and capacity / Portée et charge / Sbraccio e portata / Alcances y cargas / Alcance e capacidade de carga / Вылет и грузоподъемность

m	m/kg	m/kg													
		10,0	11,0	12,0	13,0	14,0	15,0	16,0	17,0	18,0	19,0	20,0	21,0	22,0	
22,0	2,9 – 9,3 1500	1360	1200	1080	970	890	810	750	690	650	600	570	530	500	
20,0	2,9 – 9,7 1500	1440	1270	1140	1030	940	860	790	740	690	640	600			
11,6	2,9 – 10,4 1500	1500	1390	1300											

Auslegersteilstellung 20°

Elevated jib 20°
Flèche inclinée 20°
Braccio inclinato a 20°
Pluma inclinada 20°
Lança inclinada 20°
Положение стрелы под углом 20°



Antriebe

Driving units / Mécanismes d'entraînement / Meccanismi / Mecanismos / Mecanismos / Приводы

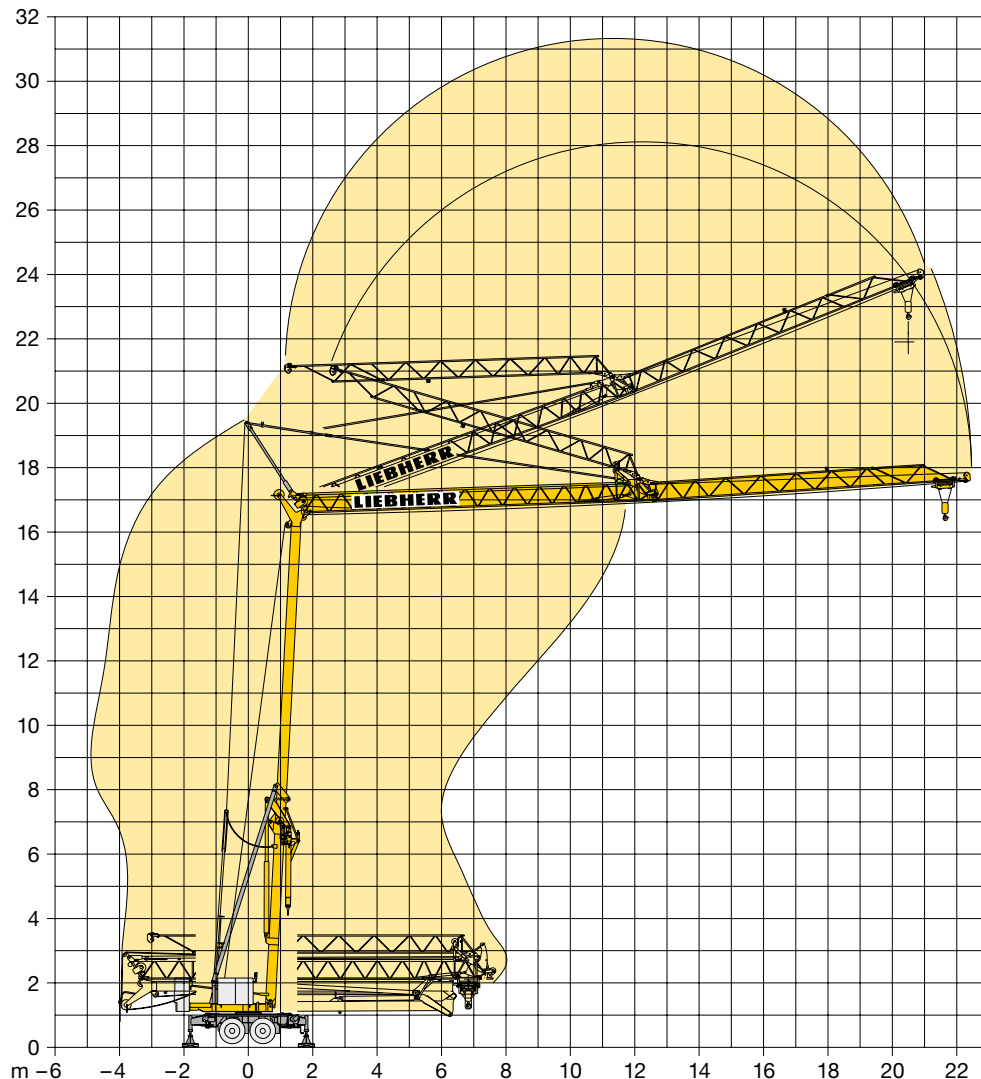
	230 V	400 V	
	U/min 0 ↔ 0,5 sl./min tr./min	U/min 0 ↔ 1,0 sl./min tr./min	1,1 kW FU
	6,0 ↔ 12,0 m/min	12,0/24,0 m/min	0,9/1,3 kW
	ca. 160°/min.	ca. 160°/min.	3,0 kW

	Stufe / Step / Cran / Marcia / Velocidad / Velocidade / Передача	
	kg	m/min
4,0 kW FU 	230 V FU	
	1	1500 2,5
	2	1500 5,0
	3	750 10,0
3,5 kW FU 	400 V FU	
	1	1500 2,5
	2	1500 12,5
	3	750 25,0
	400 V KL	
	1	1500 4,0
	2	1500 12,5
	3	750 25,0

BGL		C.0.01.0012
-----	--	-------------

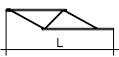
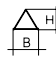
	230 V	50 Hz	16,0 A
--	-------	-------	--------

	400 V – 440 V	50 Hz/60 Hz	8,0 kVA
--	---------------	-------------	---------



Kolli-Liste

Packing List / Liste de colisage / Lista dei colli /
Lista de contenido / Lista de embalagem / Упаковочный лист

Pos.	Anz.				L (m)	B (m)	H (m)	kg
1	1	Ausleger-Verlängerung 20,0 m – 22,0 m / Jib extension / Rallonge de la flèche / Elemento estensione braccio / Prolongación de pluma / Extensão da lança / Удлинение стрелы			3,00	0,71	0,60	35

Änderungen vorbehalten! / Subject to technical modifications! /
Sous réserves de modifications! / Con riserva di modifiche! /
¡Sujeto a modificaciones sin previo aviso! / Sujeto a modificaciones! /
С правом внесения изменений!

Sämtliche Angaben erfolgen ohne Gewähr. / This information is supplied without liability. /
Ces renseignements sont sans garantie. / Tutte le indicazioni fornite senza garanzia. /
Declinamos toda responsabilidad derivada de la información proporcionada. / Declinamos
qualquer responsabilidade quanto à informação fornecida. / Все данные указаны без обязательств.

120 P – 6100 • EN 14439:2009 – A3 • BGL C.0.01.0012 • 04.20

Printed in Germany.

Liebherr-Werk Biberach GmbH
Postfach 1663, D-88396 Biberach an der Riss
☎ +49 73 51 41-0, Fax: +49 73 51 41 22 25
www.liebherr.com, E-Mail: info.lbc@liebherr.com

Liebherr Industrias Metálicas, S.A.
Polígono Industrial Agustinos, calle E, E-31014 Pamplona
☎ +34 94829 70-00, Fax +34 94829 70-29
www.liebherr.com, E-Mail: info.lim@liebherr.com